



Welcome to Lantabur Group





About us!

- ✓ Lantabur Group is a joint venture company, partnership between UK & BD, providing total solution from Design input, Yarn manufacturing to Finished Garment as a complete package.
- ✓ 18 Years Our Partnership with good governance, we wanted to extend long time partnership Culture to our valued customer.



Lantabur Group

Taqwa Fabrics Ltd



Lantabur Apparels Ltd



Lantabur Group is all about the Quality, Commitment, Efficiency & Innovations!

Lantabur Group



The textiles and apparel related members of these Five Companies
are

LANTABUR GROUP

Lantabur Group - Overview



Established in -2007
3 Garments Factories
125 Production Lines
Employees 7700
6 M Pcs Monthly Capacity
174 M USD Turnover PA

COMPLIANCE

RSC : Taqwa 100%
Corrected, Lantabur 87%.
Better Work
BSCI, SEDEX
OEKO-TEX 100

KEY CUSTOMERS

H&M, Walmart, Next, Puma
Hurley, Columbia, Best Seller,
Orsay, Tchibo, Primark, OTCF/4F.

PRODUCT TYPE

Knit Activewear 14%
Knit Outerwear 8%
Knit Dresses 4%
Knit Top & Btm 55%
Sleepwear 15%
Swimwear 4%

GROWTH Overview



WASHING

1 State of Art Laundry
Capacity - 25000 Pcs/day
Wash type - Gmt Dye, Tie Dye,
Acid and type

OTHER CAPABILITES

Design and R&D Support-
3D Design in CLO- Yes/Optitex
Seam Sealing Machine- NO
Inhouse placement Print-Yes
Capacity 170K pcs/day
Inhouse Embroidery-Yes, 28K/d
Inhouse label & packaging-Yes
AOP- sample yardage printing
In-house Narrow fabrics-
Elastic, Drawcords, sewing
Thread

VERTICAL CAPABILITIES

Fabric Knitting 1300-1560
Tons/Month
Knit Fabric Dyeing 1690
Tons/Month
AOP- 650 Tones/Month
Y/D- 156 Tones/Month

Lantabur Group

Customer Overview



BESTSELLER®



Hurley



4F



Lantabur Group



Sample Section

- Capacity : 500 pcs per day.
- Fabric support : 35 batches Every day.
- 3D : 4-6 Styles/Day,
Software : Optitex
(Accredited for H&M).



Lantabur Group



Lantabur Textile (Spinning)

- Capacity : 40MT/Day (1st Phase).
- Qualities : Compact yarn in Card & Combed, OE Rotor.
- Sustainability label : BCP, OCS, GRS in both natural, MMF & MMCF.
- No of Spindles : 60,192 Ring Spindles & 2 X 500 Rotor (1st Phase).



Lantabur Group

Financing partner : Pls click on the Video



Machinery partner : Trützschler Group

Trützschler Group

18,116 followers
3mo • Edited •

State-of-the-Art Spinning Mill in Bangladesh

Lantabur Textiles Ltd., a leading garment manufacturer in Bangladesh, will open a highly automated, state-of-the-art spinning mill in 2024. It will be the first spinning mill in Bangladesh with an automated storage of raw cotton and finished goods. The required energy for the mill's sustainable operation will largely be sourced from a solar panel installation. Trützschler is pleased to supply intelligent spinning preparation solutions for this ultra-modern mill.

From left to right: Mr. Gerold Gonska, Sales Area Manager Trützschler, Markus Wurster, Director Trützschler Group Sales, Mr. Salman, Managing Director of Lantabur, Dr. Bettina Temath, Head of Global Marketing, Trützschler

[#itsTrue](#) [#Trützschler](#) [#spinning](#) [#bangladesh](#) [#innovation](#) [#customer](#)



Lantabur Group



Knitting

Capacity: 55-60 Tons/day

- Capable of knitting different fibre & blends.
- OCS, GOTS & GRS Certified.
- Capable of producing different structures : Single & Double Jersey with derivatives, Flat Knits! (Pique, Waffle, Drop needle, Rib, interlock, Bubble knit, Stripes in Feeder & Engineering, Pointelle rib, Plaited jersey, French terry, Fleece etc.)



Lantabur Group



Dyeing

**Capacity : 65 tons/day
(1690 tons/Month)**

- All EU Brand M/C.
- 30 Production machine.
- 19 sample machine.



Lantabur Group



Fabric Finishing

Capacity : 70 Tons/Day (1820 Tons/Month)

Finishing Route: Both Open & Tubular.

Finishing Range : Silicon, Sueded, Elastomeric, Teflon, Easy-care, Wicking Finish, UV Protection, Anti Bacterial, Bionic, Stay-New and Stain Resistant etc.



Lantabur Group



All Over Print:

**Capacity: 30 Tons/Day
(780 Tons/Month)**

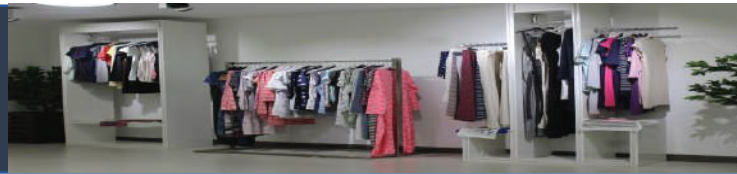
Machines:

- EU Brand M/C.
- Rotary : 2 M/C upto 16 colours.
- Flatbed : 1 M/C upto 12 color.

Capabilities : Pigment (Water-based), Reactive, Discharge, Disperse, Sublimation, Glitter (Including Sparkle), Metallic etc.



Lantabur Group



Sublimation Print

**Capacity : 25K Pcs/Day
(650K Pcs/Month)**



Lantabur Group



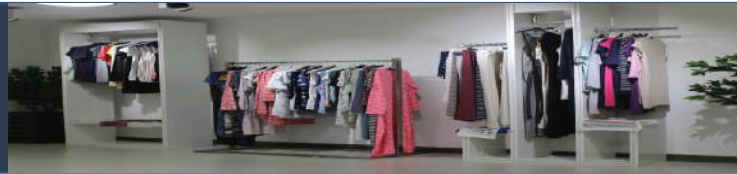
Placement Print

**Capacity : 3,50,000
panels/day**

- EU Brand M/C.
- Octopus : 20 pcs (Upto 16 color)
- Oval : 3 pcs (Upto 24 color with flexibility of multiple of no of style print same time).
- Label print machine : 10 pcs
- No. of Flat Table (Manual Print) : 30 pcs (84 feet).



Lantabur Group



Embroidery

**Capacity : 30,000
Pcs/Day**

- Capabilities : All kind of stitches, 3D application & variations, Sequine application (Stitched down & Reversible).



Lantabur Group



Yamin Accessories Ltd

- Elastic/D-String (including Jacquard) -2.7M Yds
- Poly Bag 3.4 M Pcs
- Carton (Auto) 0.78M Pcs.
- Gum Tape 0.26 M Pcs
- Sewing Thread 13M Cone.
- Printing Press (Board/Photo Inlay/Tag Sticker & Others/Carton Tissue/E/F Flute Box) 11.7 M pcs/Month.
- LABEL 340M pcs/Month.

Lantabur Group



GMT Wet processing Capacity: 28,000 pcs/day

Dye Process

- Pigment Dye
- Reactive Dye
- Pop Dye
- Sulfur Dye
- Dip Dye
- Tie Dye
- Cool Dye

Wash Processing

- Acid Wash
- Rubber-ball Wash
- Silicon- Enzyme wash
- Heavy Enzyme Wash
- Burn out wash
- Towel Bleach
- Ink Spray
- Aqua wash
- Bleach wash

Washing M/C

- M/C: Tonello (Italy),
Dryer: Triveneta (Italy)





Central Laboratory

- Chemical Lab
- Physical Lab
- Test Facilities : 40
- Fabric to Accessories
- Accredited by : H&M, Bestseller, NEXT etc.
- Separate light source & Dark Room for EU & USA Customers.





Our product Range



Full Range of
Kids Assortment
Polo Shirt,
Hoody, Knit
Jackets,
Crewneck,
Legging
Shorts, Trousers

Top + Bottom
Sets, Activewear,
Outerwear,
Dresses,
Sleepwear/Night
wear/loungewear,
Swimwear



What we can offer to the customer

- ✓ With the overseas marketing office at Dusseldorf, Germany, we shall be able to provide service for.
 - **Participating Brand review & Collection meeting in Europe with the short notice.**
 - **Design support with the team based in EU & Bangladesh.**
- ✓ As Everyone is looking for shorter Leadtime, Lantabur can extend the support to product near shore facility aligning with the customers long term partnership strategy.
- ✓ In case of customer's are looking for LDP orders, can be accommodated as well.

Lantabur Group



Garment Production

Total 125 Sewing lines
6 M Pcs Average Monthly Capacity

GSD Certified.





OUR COMMITMENTS TO THE ENVIRONMENT

- WTP : 200 m³ per hour and 4,800 m³ per day .
- 2 ETP's : 180 m³ per hour and 4,320 m³ per day .
- Higg FEM, FSLM
- ZDHC Chemical Management, Water & Waste Water Management Etc.
- Renewable/Solar Energy **1.68MW** (70% of total Unit Consumption), We will be sharing **CER/REC Certificates** with our valuable Customers.



Lantabur Group



Certifications

- RSC
- NIRAPON
- Sedex
- OCS, GRS & GOTS
- OEKO-TEX & Step by OEKO-TEX
- WRAP
- ACCORD (Green)
- BSCI
- Better work
- FAMA for Disney License Production





Thank You

