

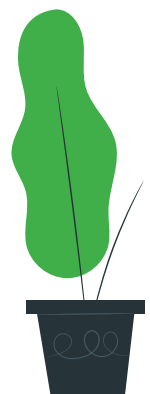
MOUCHAK KNIT COMPOSITE LTD.

100% Export Oriented Readymade Garments Manufacturing Company

Company Profile

Contents

OUR STORY.....	1
MISSION.....	2
VISION	2
OUR HISTORY.....	3
OUR PRIDE	4
MESSAGE FROM THE CHAIRMAN	6
MESSAGE FROM THE MANAGING DIRECTOR.....	7
MESSAGE FROM THE ADDITIONAL MANAGING DIRECTOR.....	8
CONTACT US.....	9
BASIC INFORMATION.....	11
GARMENTS DIVISION	13
ESTEEMED BUYERS.....	26
COMPLIANCES	27
IMAGE EXHIBIT	28
CONCLUSION	37



OUR STORY

In the heart of the industrial zone in Gazipur city, Bangladesh, stood the impressive factory of Mouchak Knit Composite Limited (MKCL). From its prime location, MKCL tirelessly worked to meet the demands and challenges of the ever-evolving garments manufacturing industry. With a commitment to cater to the dynamic needs of both domestic and international clients, MKCL had established itself as a significant entity in the sector of 100% Export Oriented Composite Ready-Made Garments Manufacturing Companies.

The success of MKCL lay in its ability to understand the needs of its customers and adapt to innovative changes. By staying in tune with the requirements of end-users, MKCL achieved its esteemed position in the industry. The company took immense pride in serving its valued customers by providing quality, performance, and timely services in the most practical and cost-effective manner. MKCL consistently met and exceeded the expectations of its clients through continuous quality improvement and a steadfast commitment to excellence.

MKCL never shied away from embracing new challenges, always striving to keep pace with the latest technologies in the modern Textile & Apparel industry. Their unwavering dedication to staying at the forefront of the industry allowed them to adapt and thrive in an ever-changing market.

MKCL's factory buzzed with activity. Workers diligently operated the high-performance machinery, transforming raw materials into exquisite garments. Quality control experts meticulously inspected each item, ensuring that every product leaving the factory met the international standards that MKCL had become renowned for.

The garments produced by MKCL graced the wardrobes of individuals around the world. Their creations became synonymous with style, durability, and unmatched craftsmanship. Whether it was a cozy sweater for a winter evening or a fashionable dress for a special occasion,

MKCL's garments brought joy and satisfaction to customers worldwide.

MKCL's journey was not without its obstacles, but the company's resilience and determination allowed it to overcome every hurdle that came its way. With each passing year, their reputation grew stronger, and their client base expanded. MKCL became a beacon of excellence in the garments manufacturing industry, admired and respected by competitors and customers alike.





To be a global leader in garments manufacturing, delivering superior quality and innovative solutions that exceed client expectations.

MISSION

Revolutionizing the industry through excellence, sustainability, and technological advancements, while creating a positive impact on stakeholders and the environment.

VISION

OUR HISTORY

Sadma Group is widely recognized as one of the foremost integrated garments manufacturing companies in Bangladesh. Established in 2002, Sadma Group initially commenced operations as a small-scale manufacturer specializing in Knitted Apparels. Over the course of two and a half decades, Mouchak Knit Composite Ltd. has undergone substantial growth and expansion, successfully diversifying its operations to encompass various sectors of the textile industry, including knitting, dyeing, embroidery, and garments.

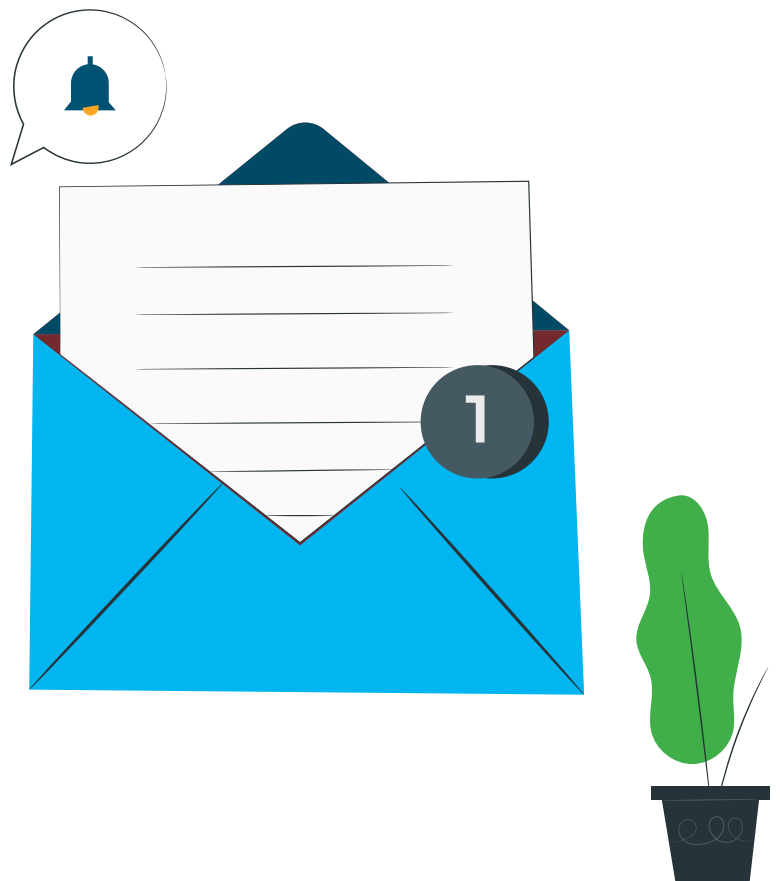
In addition to Sadma Fashion, our flagship entity, **Sadma Group** is comprised of several other concerns. These include **Sadma Fashion Wear Ltd.**, **Mouchak Knit Composite Ltd.**, **Mahadi International Ltd.**, **Appropriate Apparels Ltd.**, **Mahadi Apparels Ltd.**, and **Wavespan Solutions Ltd.** Each of these entities operates within its specific domain, contributing to the overall success and growth of the group as a whole.

At Sadma Group, we pride ourselves on utilizing state-of-the-art, modern, and computerized equipment sourced from around the world. This enables us to maintain a highly efficient operational and production system, which in turn enhances our capacity to deliver exceptional products. Furthermore, our organization boasts robust research and development capabilities, enabling us to continually innovate and stay at the forefront of the industry.

By combining our extensive experience, cutting-edge technology, and dedicated workforce, Sadma Group remains committed to providing exceptional quality and unparalleled service to our valued customers.



MESSAGES FROM THE BOARD OF DIRECTORS.





MESSAGE FROM THE CHAIRMAN



Dear buyers and revered guests,

It is with immense honor and a deep sense of gratitude that I address you today as the Chairman of Mouchak Knit Composite Ltd. On behalf of the entire organization, I extend my heartfelt appreciation for your unwavering support, trust, and belief in our company's vision and capabilities.

As I reflect upon our remarkable journey, I am filled with an overwhelming sense of pride and satisfaction. From humble beginnings, we have traversed a path of growth, innovation, and success, emerging as one of the leading manufacturers and exporters of premier clothing items in Bangladesh.

This achievement would not have been possible without the relentless dedication and hard work of our talented workforce, the invaluable contributions of our esteemed partners, and the continuous encouragement of our valued customers.

At Mouchak Knit Composite Ltd., we believe that success should be measured not only by financial achievements but also by the impact we have on society and the environment. With this conviction, we have embraced Corporate Social Responsibility as an integral part of our organizational ethos.

As we embark on this next phase of our journey, I invite you to join hands with us. Together, let us create a future where excellence, sustainability, and social responsibility converge, and where Mouchak Knit Composite Ltd. stands tall as a symbol of pride for our nation. I express my deepest gratitude once again for your invaluable support and reaffirm our commitment to delivering on our promises.

With utmost sincerity,
Md. Lokman Hossain,
Email: lokman.sfwl@gmail.com



MESSAGE FROM THE MANAGING DIRECTOR



Dear Esteemed buyers and distinguished guests,

With an overwhelming sense of pride, I am pleased to present Mouchak Knit Composite Ltd. as a prominent manufacturer and exporter of premier clothing items in Bangladesh.

Our journey has been nothing short of remarkable, as we have witnessed the remarkable growth of Bangladesh, now a significant player in the garment industry. We strive to maintain our integrity and, above all, our commitment. Our unwavering goal has always been to produce high-quality items and deliver them punctually.

Moreover, we have a profound dedication to Corporate Social Responsibility, which serves as our guiding principle and a source of great pride evident in our organizational management, workforce, and environmental practices.

I firmly believe that Mouchak Knit Composite Ltd. eagerly anticipates further growth, aiming to establish itself as one of the most prominent organizations in Bangladesh's apparel sector and to play a significant role in the country's economic landscape through job creation and diverse business operations.

In conclusion, Mouchak Knit Composite Ltd. remains steadfast in its pursuit of excellence, guided by unwavering integrity and a passion for delivering exceptional clothing items. We are poised to embrace future opportunities, uphold our values, and make a lasting impact on the apparel industry in Bangladesh and beyond.

With heartfelt regards,
Md. Nasir Uddin,
Email: mdnasir.sf@gmail.com

MESSAGE FROM THE ADDITIONAL MANAGING DIRECTOR



Dear Respected clientele and esteemed guests,

It is with great honor and a profound sense of responsibility that I address you today as the Additional Managing Director of Mouchak Knit Composite Ltd. On behalf of the entire leadership team, I extend my heartfelt gratitude for your continued support, trust, and belief in our organization's mission and potential.

At Mouchak Knit Composite Ltd., we have embarked on a journey driven by a passion for excellence, innovation, and customer satisfaction. Today, I stand before you with immense pride, witnessing the remarkable progress we

have made as one of the foremost manufacturers and exporters of premier clothing items in Bangladesh.

In an ever-evolving and highly competitive industry, our commitment to staying ahead of trends and surpassing customer expectations has been unwavering. We have consistently strived to create clothing items of exceptional quality, style, and durability, catering to the diverse needs and preferences of our esteemed clientele. Through continuous research and development, cutting-edge design techniques, and the implementation of advanced manufacturing practices, we have established ourselves as a trusted brand synonymous with excellence and fashion-forward thinking.

In conclusion, I extend my sincerest appreciation to each and every one of you for your unwavering support and belief in Mouchak Knit Composite Ltd. Together, let us embrace the future with confidence, as we strive to exceed expectations, embrace sustainable practices, and drive positive change in our industry and society. I am honored to be part of this incredible journey, and I look forward to the continued growth and success of Mouchak Knit Composite Ltd.

Sincerely,
Mohammed Jahir Uddin,
Email: jahir.sf@gmail.com

CONTACT US

CORPORATE OFFICE

HOUSE: 20, ROAD: 1/A, SECTOR: 09, UTTARA, DHAKA,- 1230,
BANGLADESH.

PHONE: +880255080346,+880255080347, +880255080348

IP: 09611677771

FACTORY OFFICE

KALIAKAIR, KALIAKAIR, GAZIPUR, BANGLADESH.

PHONE : 09611677773

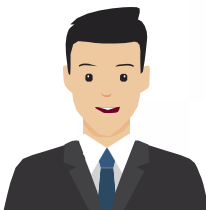
CONTACT PERSON(S)



Mohammed Jahir Uddin
Additional Managing Director
jahir.sf@gmail.com



Pahan Nalaka Guruge
General Manager
IE & Planning
nalaka@mouchakknit.com



Md. Babul Talukder (Babu)
Assistant General Manager
Finance & Accounts
b.talukder4u@yahoo.com
babu.acc@mouchakknit.com



Kazi Tuhin Hossain
Group Manager
Admin, HR & Compliance
compliance@mouchakknit.com
tuhincompliance.bd@gmail.com

BASIC INFORMATION

FOUNDED IN 2009

**LAND SIZE
56193
SQUARE FEET**

**EXPORT
REVENUE
\$15 MILLION
PER MONTH**

27 LINES

**TOTAL WORKERS
1800**

**MALE
950**

**FEMALE
850**

Facility	Garmenting
Trade Licence No.	14/2023-2024
TIN No.	164663230958
BIN No.	000526693-0103
Lien Bank	Jamuna Bank Ltd.
Production Area	
Land Size	56192.4 SFT (24.0230277”N 90.2889478”E)
5 th Floor, 4 th Floor, 3 rd Floor, and 2 nd Floor	16800 SFT
1 st Floor	8000 SFT
Ground Floor	12800 SFT
Other Spaces	30413 SFT
Production Capacity	
Basic T-Shirt/Tops	78,000 PCS/DAY
Polo or Fany Items	52,000 PCS/DAY
Average Styles	45,000 PCS/DAY
Floor Layout	
5 th Floor	Cutting Area, Office room, Size Set Section, Maintenance Room, Male & Female Wash Room, Sample, and CAD Room
4 th Floor, 3 rd Floor, and 2 nd Floor	Sewing Section & Finishing Area, Office Room, Inspection Room, Drinking Water Zone, Segregated Male & Female Wash Room, and Ideal Machine zone.
1 st Floor	Reception, Conference Room, Corporate Office, IT room, Left over room, Finished Goods Storage Area, Office, and Training room
Ground Floor	Warehouse, Accessories Store, Yarn Store. Lab Room, Fabric Checking Zone, Child care, and Medical section

GARMENTS DIVISION

Mouchak Knit Composite Ltd. (MKCL) has established itself as one of the leading garment manufacturers in Bangladesh, and there are numerous reasons why it stands out as a great company in the industry.

State-of-the-art machinery: MKCL invests in cutting-edge technology and modern machinery, enabling efficient and precise manufacturing processes. The use of advanced equipment ensures high-quality production, increased productivity, and the ability to meet stringent industry standards.

Skilled and dedicated workers: MKCL boasts a workforce of skilled and experienced professionals who are committed to excellence. Their expertise, attention to detail, and commitment to delivering top-quality garments contribute significantly to the company's success.

Efficiency and productivity: MKCL is renowned for its efficiency in operations, streamlining processes, and optimizing resource utilization. The company continually seeks innovative solutions and implements best practices to maximize productivity and deliver products on time.

Ability to handle critical styles: MKCL has demonstrated a remarkable ability to handle complex and intricate garment styles. With extensive experience in manufacturing a wide range of garments, including intricate designs, the company has garnered a reputation for delivering exceptional quality and attention to detail.

Strong supply chain management: MKCL has established robust supply chain management practices, ensuring the timely availability of raw materials and seamless coordination between various departments.

This efficient supply chain management contributes to the company's ability to meet customer demands and deliver products promptly.

Quality Assurance: MKCL places a strong emphasis on quality assurance throughout its manufacturing processes. The company follows stringent quality control measures, from the sourcing of materials to the final inspection of finished garments. This commitment to quality ensures that MKCL consistently delivers garments that meet or exceed customer expectations.

Compliance with industry standards: MKCL adheres to international standards and certifications, ensuring ethical practices, worker safety, and environmental sustainability. The company is committed to maintaining compliance with regulations and industry guidelines, reinforcing its reputation as a responsible and reliable manufacturer.

Continuous improvement and innovation: MKCL is dedicated to continuous improvement and innovation. The company invests in research and development, exploring new technologies and techniques to enhance production efficiency, product quality, and sustainability. This commitment to innovation allows MKCL to stay ahead of market trends and customer preferences.

Strong market presence: MKCL has established a strong presence in the market internationally. The company's commitment to quality, efficiency, and customer satisfaction has earned it a reputable position in the global garments manufacturing industry.

In summary, MKCL's state-of-the-art machinery, skilled workforce, efficiency, ability to handle critical styles, commitment to quality, and customer-centric approach are some of the key factors that contribute to its status as one of the top garment manufacturers in Bangladesh.

OUR PROCESS

Mouchak Knit Composite Ltd., herein referred to as the Company, operates with a general process outlined below. It is important to note that the specific process employed by the Company may be subject to alteration in accordance with the specific requirements of each order.

The general process followed by Mouchak Knit Composite Ltd. encompasses various stages and activities aimed at ensuring the successful completion of orders. These stages typically involve, but are not limited to, the following:

Fabric Sourcing: The process begins with the selection and procurement of suitable fabrics. Manufacturers like Mouchak Knit Composite Ltd. (MKCL) work closely with trusted suppliers to source a wide range of fabrics, including cotton, polyester, blends, and specialty fabrics like organic, rayon, modal, and more. The choice of fabric depends on the specific garment requirements and customer preferences.

Fabric Inspection: Once the fabric arrives at the manufacturing facility, it undergoes a meticulous inspection. Highly trained quality control personnel examine the fabric for any defects, flaws, or irregularities. This inspection ensures that only high-quality fabric is used for production, maintaining the company's commitment to excellence.

Fabric Pre-Treatment: Before moving into the manufacturing process, the fabric may undergo pre-treatment processes such as washing, bleaching, dyeing, or printing. These treatments help achieve the desired color, texture, or finish and prepare the fabric for subsequent manufacturing steps.

Pattern Making and Cutting: Pattern making involves creating a template based on the desired garment design. Skilled pattern makers use computer-aided design (CAD) software or traditional techniques to draft precise patterns. Once the patterns are finalized, they are used as a guide for cutting the fabric. Cutting operators use cutting machines or hand-cutting techniques to carefully cut the fabric into pattern pieces, ensuring accuracy and minimizing wastage.

Garment Stitching: The cut fabric pieces are then transferred to the sewing section, where experienced machinists stitch them together to form the garment. This process involves operating various types of sewing machines, each specialized for specific stitching techniques like straight stitching, zigzag stitching, overlock stitching, and more. Skilled operators work meticulously to maintain consistent stitching, proper seam allowances, and overall garment integrity.

Trimming and Finishing: After the initial stitching, the garment goes through trimming and finishing processes. Trimmers remove any excess threads, trim seam allowances, and carefully clean the garment to ensure a neat and polished appearance. Finishing touches such as attaching buttons, zippers, labels, or other embellishments are also completed at this stage.

Quality Control and Inspection: Quality control plays a vital role throughout the entire manufacturing process. At MKCL, a dedicated team of quality control inspectors thoroughly examines each garment to ensure it meets the company's stringent quality standards. Inspections cover various aspects, including measurements, stitching quality, fabric integrity, color accuracy, and overall workmanship.

Pressing and Steaming: Once the garments pass the inspection, they undergo pressing and steaming to eliminate wrinkles and give them a crisp, professional appearance. Pressing is done using specialized machines and techniques to ensure proper shaping and finish.

Final Packaging: The last step involves carefully folding, tagging, and packaging the finished garments. MKCL pays attention to detail in packaging, ensuring that the garments are well-protected during transportation and that all necessary labels and tags are attached.

The journey from fabric to finished goods requires meticulous attention to detail, skilled craftsmanship, advanced technology, and a robust quality control system. Through each step of this comprehensive process, MKCL ensures that the garments produced meet the highest standards of quality, durability, and aesthetic appeal.

It is important to emphasize that the aforementioned general process serves as a framework, which may be subject to modifications, adaptations, or additions to accommodate the specific requirements and preferences of individual orders. The Company remains committed to meeting the unique needs of its clients while ensuring consistent quality and adherence to industry standards.



“Stitching Excellence, United by Pride: Our Workers, Our Factory’s Strongest Stride!”

OUR PRODUCTS



At Mouchak Knit Composite Ltd., we have mastered the art of delivering exceptional products that cater to every individual, from kids to men and women. With an unwavering commitment to style and unbeatable value, we have consistently provided our customers with the best of the best.

For **kids**, we offer a delightful array of clothing and accessories that embody the essence of childhood joy and imagination. From vibrant and playful designs to durable materials that withstand the rigors of their adventures, our products ensure comfort and style for the little ones.

When it comes to **men's** fashion, we understand the need for versatility and timeless appeal. Our meticulously crafted garments exude sophistication and contemporary trends, tailored to suit various preferences and occasions. Whether it's a casual outing or a formal event, our collection guarantees that every man stands out with confidence and elegance.

Our range for **women** is a fusion of classic charm and modern flair. From elegant dresses to comfortable activewear, we strive to offer a diverse selection that empowers women to express their unique personalities. With attention to detail and exceptional quality, our clothing ensures both comfort and trendsetting style, making every woman feel extraordinary.

At Mouchak Knit Composite Ltd., we not only focus on the latest fashion trends but also prioritize providing great value to our customers. Our commitment to excellence means that our products are made with the highest quality materials, ensuring durability and longevity. We believe that everyone deserves access to exceptional fashion without compromising on affordability.



Igniting Style Across Generations: Crafting Wearables for All

Mouchak Knit Composite Ltd.
is your one-stop destination for
all types of **menswear**, **women's wear**, and **kids wear**,
catering to every fashion need with unrivaled expertise.

LIST OF MACHINERIES

S. L.	Machine Name	Brand	Model No.	Category	No. of Machineries
1	Single Needle Lock Stitch	Brother	7000 DD	Auto	137
2	Single Needle Lock Stitch	Brother	6200 A	Auto	60
3	Single Needle Lock Stitch	Brother	1110	Manual	10
4	Single Needle Lock Stitch (Verticle)	Brother	7778	Manual	8
5	Single Needle Lock Stitch	JUKI	8100	Auto	10
6	Single Needle Lock Stitch	ZUSAN	9300 H	Auto	54
7	Single Needle Lock Stitch	Brother	7250 A	Auto	100
8	Single Needle Lock Stitch	Max		Auto	9
9	Single Needle Lock Stitch	Brother	JK-700-4	Auto	100
10	Single Needle Lock Stitch	Jackly		Auto	20
TOTAL SINGLE NEEDLE LOCK STITCH					508
10	4Thread Overlock	Pegasus	M5720	Manual	43
11	4Thread Overlock(Lace Join)	Pegasus	M5720 TK	Manual	10
12	4Thread Overlock	Siruba	747 K	Manual	40
13	4Thread Overlock	Juki	MO 6714	Auto	40
14	4Thread Overlock	Kansai	UK 2014 H	Manual	31
15	4Thread Overlock	Yamato	CZ6125	Auto	45
16	4Thread Overlock(Elastic Join)	Yamato	AZ8451	Manual	
17	4Thread Overlock	Jakly	JK-9600 MDS	Manual	25
18	4Thread Overlock	Juki	MV-3614 M	Manual	9
19	4Thread Overlock	Yamato	JAKLAC-1	Manual	1
20	4Thread Overlock	Jack		Manual	1
21	6Thread Overlock	Yamato	AZ8520SD	Auto	50
22	4Thread Overlock	Yamato	Z7120SD-Y8DF	Auto	150
23	6Thread Overlock	Yamato	Z7520SD-AY5DF	Auto	20
TOTAL OVERLOCK MACHINE					465

S. L.	Machine Name	Brand	Model No.	Category	No. of Machineries
24	Flat Lock(Hemming)	Pegasus	W1662P-FTOC	Manual	2
25	Flat Lock(Hemming)	Juki	MP7923 H	Auto	6
26	Flat Lock(Hemming)	Siruba	007 K	Manual	5
27	Flat Lock-CB	Pegasus	W1662P-BS	Manual	11
28	Flat Lock-CB	Juki	MF7923U	Auto	4
29	Flat Lock-CB	Kansai	RX9803CC/UTC	Auto	23
30	Flat Lock-CB(Narrow)	Siruba	007K-UT	Auto	16
31	Flat Lock-CB	Siruba	007K	Manual	1
32	Flat Lock-FB(F-Set)	Pegasus	1562P	Manual	13
33	Flat Lock-FB(F-Set)	Max	W-500	Manual	3
34	Flat Lock-FB(F-Set)	Yamato	CF-2303M	Auto	13
35	Flat Lock-FB(D-Set)	Siruba	F007 J	Manual	8
36	Flat Lock-FB(Lace Attach)	Pegasus	1562 P-05 B	Manual	5
37	Flat Lock-FB(West Belt Attach)	Yamato	VC-2713GP	Auto	6
38	Flat Lock-FB	Jackly	JK-600-1CB	Manual	4
39	Flat Lock-FB	Jackly	JK-500-1 CB	Manual	4
40	Flat Lock(Hemming)	Pegasus	W662PCH-35BX356CS	Auto	13
41	Flat Lock-CB	Pegasus	W66PCH-01GX356BS	Auto	60
42	Flat Lock-CB(Narrow)	Yamato	VE2713-1565-2-K4N	Auto	15
43	Flat Lock-CB(Puller)	Yamato	VG2713P-165M-K4N	Auto	6
TOTAL FLATLOCK MACHINE					220
44	Back Tape	Pegasus	w1522-P	Manual	2
46	Back Tape	Siruba		Manual	3
47	Feed Of The Arm(VT)	Yamato	VT-502	Manual	1
48	Feed Of The Arm	Zusan	1190		
49	Feed Of The Arm FD	Yamato	FD-62-DRY	Auto	5
50	Flat Seamer	Yamato	VFK-2560	Auto	4
51	Zig Zag	Brother	G8550A	Manual	1
52	Flat Lock-FB(F-Set)	Siruba	F007 J	Manual	
53	Flat Lock-FB(F-Set)	Kansai	WX-88033F	Manual	6
54	Zig Zag	Yamato	2135	Manual	1
55	Zig Zag	Yamato	2105	Manual	2
56	PIKODING	Siruba	Z008-248Q	Manual	2

S. L.	Machine Name	Brand	Model No.	Category	No. of Machineries
57	PMD	Kansai	1411	Auto	2
58	PMD	Kansai	FX-441BP-UTC	Manual	7
59	Button Hole	Brother	HE-800C-3	Auto	3
60	Button Hole	Brother	800-A/B	Auto	7
61	Button Stitch	Brother	438 FS	Auto	10
62	Bar Tuck	Brother	438 F/FX	Auto	6
TOTAL FLATLOCK					65
63	Rib Cutter	DINO	GENERAL	Auto	4
64	Rib Cutter	Max	GENERAL	Manual	2
65	Rib Cutter	Jackly	JK-8015	Manual	1
66	Re Coning Machine	Hashina	HW 40C	Semi Auto	1
67	Thread Machine	Max	GENERAL		4
68	Straight Knife Cutter	KM	KS-AU-V-10"	Manual	5
69	Straight Knife Cutter	Max	GENERAL	Manual	1
70	Straight Knife Cutter	KM R	GENERAL	Manual	2
71	Computerised Auto Cutter	KURIS	3080-v	Auto	1
72	Auto Spreder Machine	BOK	b5-220	Auto	3
73	Fabric Roll Opening Machine	BOK	GENERAL	Semi Auto	2
74	Fusing Press Machine	HASHIMA	HP-1000LS	Auto	1
75	Fusing Press Machine	OSIMA	OP-450 GS	Semi Auto	2
76	Heat Transparent Machine	Max	GENERAL	Semi Auto	9
77	Needle Detector Machine	Hashina	HN-2780-GS-100	Auto	3
78	Needle Detector Machine	Oshima	GENERAL		2
79	Thread Sucking Machine				
80	Spot Removing Machine	TOYO	TY-HA-1600HS	Semi Auto	1
81	Granding Machine	RCDARROW	YH-170		3
82	Steam Boiler				1
83	Euro CAD Marker			Auto	1
84	Iron Table (Flat)				2
85	Iron Table (Ladies)		LS-101-TSS	Semi Auto	62
86	Steam Iron		NH-1290J	Semi Auto	7
87	Digitizer	Silver Star	BSS-600	Semi Auto	60
88	Plotter	WINDA	WDA-3648C		1
89	Plotter	Reachpeach	RPSP-NM-ID-1-2200-II-WC4-FF-1P220	Semi Auto	1
90	Plotter	TKT		Semi Auto	1

S. L.	Machine Name	Brand	Model No.	Category	No. of Machineries
91	Pattern Cutting Table	WINDA			1
92	Fabric Relaxing Machine	WINDA			2
Other Machines					1088
Grand Total Machines					1446

OFFICE STAFFS



Mouchak Knit Composite Ltd. places a high value on the expertise and dedication of its technical personnel, who play a vital role in ensuring the seamless execution of operations. These professionals actively support workers by providing direct assistance and expert guidance in areas such as pattern cutting, sewing, quality control, and finishing packaging. This collaborative effort allows Mouchak Knit Composite Ltd. to meet the specific demands and preferences of its customers, delivering products of exceptional quality.

The technical personnel at Mouchak Knit Composite Ltd. play a critical role in maintaining the company's reputation for excellence. Their active involvement in assisting workers and coordinating activities such as pattern cutting, sewing, quality control, and finishing packaging ensures that every product meets the highest standards. By recognizing and responding to the exact demands and preferences of customers, Mouchak Knit Composite Ltd. continues to provide top-notch products that are tailored to exceed expectations.

Mouchak Knit Composite Ltd. understands the pivotal role of its technical personnel in achieving customer satisfaction. These professionals actively engage in providing direct assistance to workers, fostering a collaborative environment that enables efficient pattern cutting, sewing, quality control, and finishing packaging. By recognizing and responding to the precise demands and preferences of customers, Mouchak Knit Composite Ltd. ensures that its products are of the utmost quality, meeting the highest industry standards.

QUALITY POLICY



Mouchak Knit Composite Ltd. is fully dedicated to providing high-quality products that consistently meet the needs and expectations of customers in terms of reliability, safety, cost-effectiveness, and timely delivery of shipments. In order to achieve this objective, Mouchak Knit Composite Ltd. ensures that all necessary resources are provided to equip, train, and employ experienced personnel who are capable of effectively addressing customer requirements. The company emphasizes that quality is a shared responsibility among all staff members.

Mouchak Knit Composite Ltd. is committed to ensuring that its entire workforce is well-versed in the company's work practices and adheres to legal and other mandatory requirements. Moreover, the company is determined to comply with the expectations of buyers, such as code of conduct and social compliance, while continuously enhancing its production processes and Quality Assurance Department. The ultimate goal of Mouchak Knit Composite Ltd. is to manufacture superior products and achieve customer satisfaction.

MEDICAL FACILITY



Mouchak Knit Composite Ltd. has established provisions to ensure the well-being and healthcare of its employees. To facilitate treatment, the company employs a doctor and two medical assistants who are responsible for addressing the medical needs of the employees. In adherence to legal requirements, the company provides medical allowances to its employees. This ensures that employees have access to necessary medical support as mandated by the law.

To further enhance employee health and safety, the company offers first aid facilities. Trained first aiders are available on-site to provide immediate medical assistance when required. Additionally, the company ensures the presence of adequate first aid boxes/kits at various locations within the premises.

The company takes responsibility for the medical expenses of its employees in case of illness or injury. It covers the entire cost of hospitalization, surgery, or any required medical treatment, providing 100% coverage without imposing any monetary limit.

Recognizing the importance of maintaining good health, the company offers free multivitamins to each worker on a daily basis. This initiative aims to supplement the employees' nutritional needs and promote their overall well-being.

In compliance with regulations and to maintain a record of incidents, the company maintains an accident register. This register serves as a log to document any injuries sustained by employees, ensuring proper reporting and follow-up procedures are implemented.

FIRE SAFETY



Mouchak Knit Composite Ltd. is fully equipped with a comprehensive range of fire-fighting equipment to ensure the safety of its premises. This includes a hydrant system, automatic fire protection and detection system. In addition, fire drills are conducted monthly to prepare employees for emergency situations.

To further enhance safety measures, the factory designates trained personnel as fire safety officers & fireman. Moreover, 40% of the workers have received training on the proper usage of fire extinguishers, while 100% of the workers possess basic knowledge of fire safety.

Emergency evacuation procedures are clearly communicated throughout the factory. Aisles, exits, and electrical panels are appropriately marked to facilitate swift and safe evacuation. The factory maintains two exits positioned on opposing sides for optimal accessibility. Additionally, electronic EXIT emergency lights are installed at the top of each exit to ensure visibility during emergencies.

To enhance safety measures, fire doors are installed in strategic locations within the factory premises. These doors serve as a barrier to contain potential fire incidents and prevent their spread. The factory prioritizes fire detection and protection systems to mitigate risks. Active fire alarms are installed and operational on all floors, enabling prompt alerts in the event of a fire outbreak. By implementing these measures, the factory aims to ensure a safe working environment for its employees and minimize the potential impact of fire incidents.

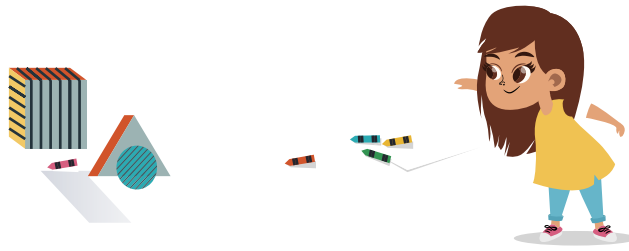
INFORMATION TECHNOLOGY



Mouchak Knit Composite Ltd. boasts a robust infrastructure that includes a Central ICT center, a wide area network, and licensed software to support its operations. The company utilizes an Enterprise Resource Planning (ERP) system, ensuring efficient management of resources and processes across various departments.

To streamline attendance and payroll management, Mouchak Knit Composite Ltd. implements an online system that allows employees to record their attendance and facilitates accurate payroll processing. The company also utilizes an accounting information system to maintain comprehensive financial records and ensure transparent and accurate financial reporting. Recognizing the importance of data security and continuity, Mouchak Knit Composite Ltd. has implemented a robust data backup system to protect vital information from loss or damage. Additionally, the company maintains a CCTV system to enhance security measures and ensure a safe working environment for its employees.

Ensuring Child Safety and Upholding a No Child Labor Policy



Mouchak Knit Composite Ltd. upholds a strong commitment to ethical and responsible practices, particularly when it comes to labor standards. The company strictly adheres to a no-child labor policy, recognizing the importance of protecting the rights and well-being of children.

To support its employees and create a conducive working environment, Mouchak Knit Composite Ltd. goes beyond the mere prevention of child labor. The company demonstrates its dedication to promoting a healthy work-life balance for its workers by operating a day care center for their children.

This day care center serves as a safe and nurturing space where workers' children can receive quality care and supervision while their parents are at work. The center is equipped with qualified staff members who ensure the well-being, education, and development of the children in their care.

By offering a day care center, Mouchak Knit Composite Ltd. not only contributes to the welfare of its employees but also supports the overall welfare of the community. The provision of such facilities demonstrates the company's commitment to fostering a family-friendly work environment and promoting the holistic growth of its workers and their families.

Mouchak Knit Composite Ltd.'s dedication to eliminating child labor and providing day care services reflects its emphasis on upholding ethical practices, respecting labor rights, and prioritizing the well-being of its workforce.

CORPORATE SOCIAL RESPONSIBILITIES (CSR)



Mouchak Knit Composite Ltd. recognizes the importance of corporate social responsibility and actively engages in initiatives that contribute to the well-being of the community and the environment. As part of its corporate social responsibility efforts, Mouchak Knit Composite Ltd. emphasizes ethical labor practices, ensuring fair wages, safe working conditions, and a respectful workplace for its employees.

Mouchak Knit Composite Ltd. demonstrates its commitment to sustainability by implementing eco-friendly practices throughout its operations, including waste reduction, energy conservation, and responsible water usage. The company actively engages in social welfare initiatives by supporting local communities through educational programs, healthcare initiatives, and infrastructure development projects.

Mouchak Knit Composite Ltd. prioritizes the health and safety of its employees and invests in their personal and professional development through training programs and initiatives aimed at enhancing their skills and well-being. Through its commitment to corporate social responsibility, Mouchak Knit Composite Ltd. strives to be a responsible and accountable corporate citizen, making positive contributions to society while maintaining ethical business practices.

ESTEEMED BUYERS

Buyers	Origin
PRIMARK	UK & GERMAN
CHISTIA/ ISSA	ITALY, SPAIN & POLAND
MATALAN	UK
MAX	KSA
ATLAS	FRANCE
KIK	GERMAN
ALDI	GERMAN
FAMILY DOLLAR	USA



COMPLIANCES



IMAGE EXHIBIT



MAIN BUILDING





CUTTING AUTO SPREADER MACHINE



AUTOMATIC CUTTING MACHINE



CUTTING SECTION



CUT PANEL INSPECTION



SEWING SECTION





END LINE INSPECTION



IRONING AREA



FINISHING AREA



FINISHING INSPECTION AREA



SAMPLE R&D SECTION



SPOT REMOVING AREA



FINISHED GOOD WAREHOUSE



GENERAL STORE AREA



CHILD CARE SERVICE



FIRE PUMP

CONCLUSION



Mouchak Knit Composite Ltd. exemplifies its dedication to customer satisfaction and product excellence through its extensive workforce of technical personnel. With approximately 200 individuals holding key positions, the company ensures direct support to workers and efficient coordination of crucial operations such as pattern cutting, sewing, quality assurance, and finishing packaging. By emphasizing reliability, safety, cost-efficiency, and timely delivery, Mouchak Knit Composite Ltd. strives to meet and exceed customer expectations.

The company recognizes the importance of understanding and meeting the specific demands and preferences of its customers. This commitment is reflected in its continuous investment in a skilled and experienced workforce. By providing the necessary resources for training and equipping its personnel, Mouchak Knit Composite Ltd. ensures the production of high-quality products that consistently align with customer needs.

Through its diligent efforts, Mouchak Knit Composite Ltd. upholds its commitment to delivering top-notch products while maintaining a satisfied customer base. The company's substantial team of technical personnel, working in collaboration with other dedicated employees, plays a crucial role in achieving this goal. By nurturing a culture of excellence and continuous improvement, Mouchak Knit Composite Ltd. remains a leader in its industry, delivering quality products that meet and exceed customer expectations.

