



LIC  
联桥集团



联桥集团  
LIANQIAO GROUP



**企业概况**  
Company  
Profile

**生产能力**  
Production  
Capacity

**产品展示**  
Production  
Showcase

**企业文化**  
Company  
Culture

LIC

# 企业概况 Company Profile



LIANQIAO GROUP 联桥集团

## 公司名称 Company Name

- 威海市联桥国际合作集团有限公司      Weihai Lianqiao International Cooperation Group Co.

## 成立时间 Time of Establishment

- 1997年11月28日      November 28, 1997

## 职工情况 Staff Situation

- 现有职工1800人，平均年龄35岁
- There are 1800 employees with an average age of 35 years old.

## 经营业绩 Business Performance

- 年营业额40亿元      Annual turnover of 4 billion dollars



## 公司介绍 Company Profile



- 以设计为引领，以品牌为导向，以高端外贸为主体，以现代化工厂为支撑，集服装设计、研发、生产、销售于一体。  
Design-led, brand-oriented, high-end foreign trade as the main body, supported by modern factories, integrating garment design, research and development, production and sales.
- 中国纺织工业联合会118家国家纺织产品开发基地之一，山东省纺织服装行业骨干企业，威海市时尚创意产业集群龙头企业。  
It is one of the 118 national textile product development bases of China Textile Industry Federation, a backbone enterprise of textile and garment industry in Shandong Province, and a leading enterprise of fashion creative industry cluster in Weihai.
- 年生产5000万件：毛衣占80%，针织占15%，梭织占5%，产品远销亚洲、美洲、欧洲等30多个国家。  
Annual production of 50 million pieces: 80% of sweaters, 15% of knitting, 5% of woven, the products are exported to more than 30 countries in Asia, America and Europe.



# 荣誉奖项 Honorary Awards

- **中国驰名商标** China Famous Trademarks
- **全国守合同重信用企业** National Contract-abiding and Credit-abiding Enterprise
- **全国五一劳动奖状** National May 1st Labor Award
- **中国服装百强企业** China's Top 100 Garment Enterprises
- **山东省民营企业品牌价值100强** Top 100 Private Enterprises with Brand Value in Shandong Province
- **中国对外贸易民营500强** Top 500 Private Foreign Trade Companies in China
- **工信部纺织服装百家品牌** Ministry of Industry and Information Technology Textile and Garment 100 brands
- **海关高级认证企业** Customs Advanced Certification Enterprise
- **山东省最具爱心慈善企业** The Most Caring Charity Enterprise in Shandong Province



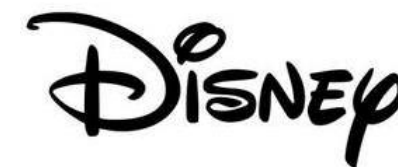
## 合作品牌 Cooperative Brands

- 是ARMANI、TARGET、GAP、WALMART、Disney等知名品牌合作伙伴。

It is the partner of ARMANI, TARGET, GAP, WALMART, Disney and other famous brands.



ALMOST ☆ FAMOUS



FOREVER 21



## 合作品牌 Cooperative Brands

- 是GU、MORIRIN、WORKMAN、岛村、classicalelf等知名品牌合作伙伴。
- It is the partner of famous brands such as GU, MORIRIN, WORKMAN, SHIMAMURA, CLASSICAL ELF and so on.





## 样品展厅 Sample Showroom

公司有6个样品展厅，共计2000m<sup>2</sup>，根据不同国家、风格等陈列毛衫、针织、梭织样衣2万款。每年开发更新3000款。

The company has 6 sample showrooms, totaling 2,000 square meters, displaying 20,000 models of sweater, knitted and woven samples according to different countries and styles. We develop and update 3,000 models every year.





# 国际时尚创意中心：2000平新品发布、时尚走秀展演大厅

International Fashion Creative Center: 2,000 square feet of new product releases, fashion runway show halls

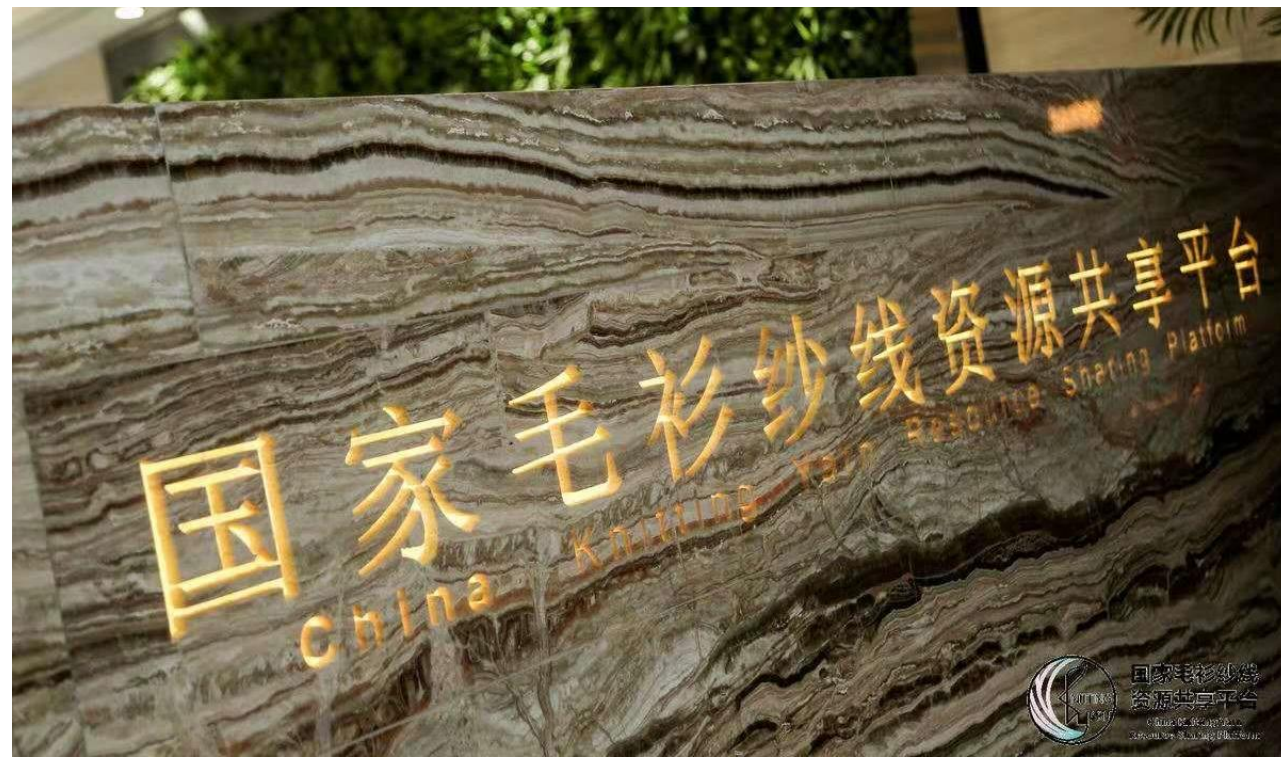




# 国家毛衫纱线资源共享平台 China Knitting Yarn Resource Sharing Platform

在政府支持下，打造中国唯一的毛衫纱线产业平台——国家毛衫纱线资源共享平台，“线上数据中心+线下展厅”协同，集供应商、设计师、采购商于一体，纱线展厅1000m<sup>2</sup>，样品库2000m<sup>2</sup>，汇聚2000家供应商、2万份纱线样品、5万份纱线电子数据。

With the support of the government, we have built China's only sweater yarn industry platform - China Knitting Yarn Resource Sharing Platform, with the synergy of "online data center + offline showroom", integrating suppliers, designers and buyers, with a yarn showroom of 1,000 square meters and a sample library of 2,000 square meters, bringing together 2,000 suppliers, 20,000 yarn samples and 50,000 electronic data of yarn. 2000 square meters, gathering 2000 suppliers, 20,000 yarn samples, 50,000 yarn electronic data.









# 工装研发中心 Uniform Research and Development Center

建设联桥工装研发中心，致力于职业装、劳保工装、功能性工装的设计研发。是日本工装品牌Workman、JICHODO的战略供应商。被认定为“山东省工业设计中心”，开发的“智能调温石墨烯发热工装”，先后获评中纺联十大创新产品、省长杯工业设计大赛优秀奖、山东省企业技术创新奖等多个国内大奖。为国内顺丰、京东、达达等公司的工装指定供应商。

Construction of Lianqiao Uniform Research and Development Center, dedicated to the design and development of vocational clothing, labor protection workwear, functional workwear. It is the strategic supplier of Japanese workwear brands Workman and JICHODO. Recognized as "Industrial Design Center of Shandong Province", the developed "Intelligent Temperature-regulating Graphene Heating Workwear" has been awarded the Top Ten Innovative Products of China Textile Federation, the Excellence Award of Governor's Cup Industrial Design Competition, Shandong Province Enterprises' Technological Innovation Award and other domestic awards. It is the designated supplier of workwear for domestic companies such as Shunfeng, Jingdong and Dada.



# 3D设计:实现从织片到成衣的虚拟设计

## 3D Design: Realizing Virtual Design from Piece to Garment



收集花型和织片

Collecting Patterns and fabrics

上传系统  
调整效果

Uploading system  
and adjusting  
effects

调取版型库资料

Accessing pattern  
library information

结合版型花型设计

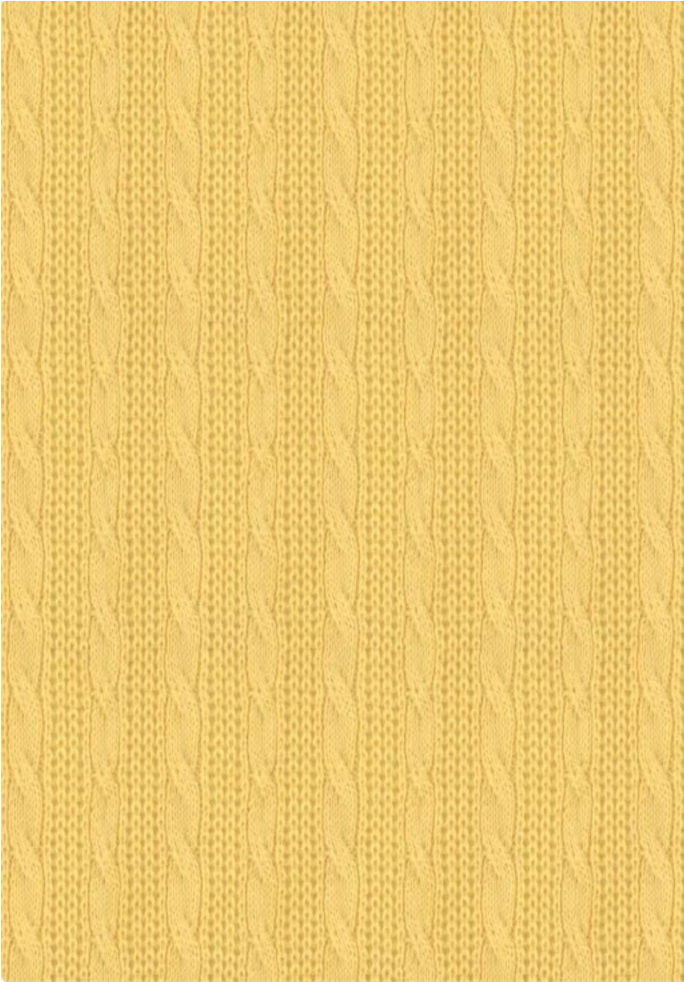
Combining pattern and  
graphic design





# 面料数据库展示：齐色搭配/样衣提案

Fabric database display: homochromatic matching/sample proposal



威海市联桥国际合作集团有限公司给您分享了一个面料

内部编号: SSD-ZT5G001  
成分: 60%涤纶,35%腈纶,5%羊毛  
纱支: 2/16NM  
针数: 5



# 面料数据库展示：齐色搭配/样衣提案

Fabric database display: homochromatic matching/sample proposal



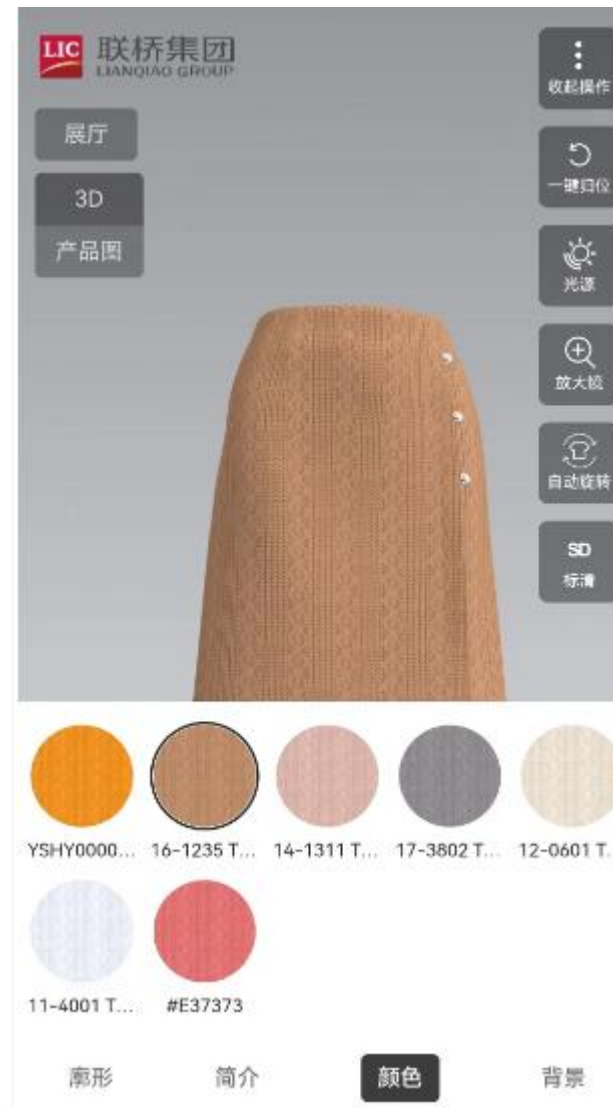
威海市联桥国际合作集团有限公司给您分享了一个面料

内部编号: YSHY000002

成分: 50%涤纶,50%腈纶

纱支: 2/28NM

针数: 5





# 面料数据库展示：齐色搭配/样衣提案

Fabric database display: homochromatic matching/sample proposal



威海市联桥国际合作集团有限公司给您分享了一个面料

内部编号: FGS22333

成分: 46%腈纶,40%再生涤纶,8%尼龙,6%氨纶

纱支: 1/2.5NM

针数: 3





# 面料数据库展示：齐色搭配/样衣提案

Fabric database display: homochromatic matching/sample proposal



威海市联桥国际合作集团有限公司  
给您分享了一个面料

内部编号: CY190630

成分: 55%腈纶,45%棉

纱支: 8S/2

针数: 5



# 样衣展示：齐色

Sample display: homochromatic



威海市联桥国际合作集团有限公司  
给您分享了一个款式

内部编号: N24HK01

类目: 针织女装-上衣





# 样衣展示：大身颜色和字母颜色不同的配色组合

Sample display: color combinations with different body colors and letter colors



威海市联桥国际合作集团有限公司给您分享了一个款式

内部编号: MO-16 修改1

类目: 女毛衫-毛衫女士套头衫



# 样衣展示：大码展示

Sample display: large size display



威海市联桥国际合作集团有限公司  
给您分享了一个款式

内部编号: 24HK01大码 (蓝色)

类目: 针织女装-上衣





# 样衣展示：圣诞装

Sample display: christmas costume



威海市联桥国际合作集团有限公司给您分享了一个款式

内部编号: S704880008 (改款)

类目: 女毛衫-毛衫女士套头衫



# 样衣展示：针梭织结合款示例

Sample display: example of knit & woven combination



威海市联桥国际合作集团有限公司  
给您分享了一个款式

内部编号: 日本市场灰色针梭结合半高领套头衫  
类目: 女毛衫-毛衫女士套头衫





# 样衣展示： 男装

Sample display: menswear



威海市联桥国际合作集团有限公司  
给您分享了一个款式

内部编号: MN03-M220815WTAW0009

类目: 男毛衫-毛衫男上衣



# 样衣展示：童装

Sample display: children's clothing



威海市联桥国际合作集团有限公司  
给您分享了一个款式

内部编号: 童装搭配款式  
类目: 女毛衫-套装





# 样衣展示：碎花连衣裙

Sample display: floral dress



威海市联桥国际合作集团有限公司  
给您分享了一个款式

内部编号: D6389

类目: 梭织女装-连衣裙



## 样衣展示： 荷叶领碎花连衣裙

Sample display: lotus collar fragmented floral dress



威海市联桥国际合作集团有限公司给您分享了一个款式

内部编号: 日本市场长袖碎花长裙

类目: 其他-其他





# 样衣展示：小香风外套

Sample display: chanel style jacket



威海市联桥国际合作集团有限公司  
给您分享了一个款式

内部编号: J6399  
类目: 梭织女装-外套



# 样衣展示：重工刺绣

Sample display: heavy industry embroidery



Weihai Lianqiao International  
Cooperation Group Co., Ltd, Share  
You With A Style: GKSS24-120

内部编号 Internal Code: GKSS24-J120

类目 Category: Woven women's clothing-overcoat





## 生产能力

### Production Capacity

- 打造山东威海、济宁、泰安、缅甸4个国内外生产基地，建设6家直属标杆工厂，配置吊装生产线，各类生产、后整设备、特种电脑机。合作工厂1600家。 Lianqiao Group builds 4 domestic and international production bases in Shandong Weihai, Jining, Tai'an and Myanmar, and constructs 6 direct benchmarking factories, equipped with lifting production lines, all kinds of production and finishing equipments, and special computer machines. 1600 cooperative factories.
- 年生产5000多万件，产品覆盖高中低档梭织、针织、毛衫产品。 The company produces more than 50 million pieces annually, covering high, medium, and low grades woven, knitted and sweater products.
- 通过了GRS、BCI、WRAP、迪士尼/Disney、BSCI、SLCP等国际审核认证和资质。 We have passed international audits and certifications and qualifications such as GRS, BCI, WRAP, Disney/Disney, BSCI, SLCP and so on.





# 济宁毛衫生产基地—乔盛纺织科技

## Jining Sweater Production Base-Qiaosheng Textile Technology

位于山东济宁泗水经济开发区中韩产业园，建筑面积1.4万平米，员工300人；拥有智能编织机、高速缝合机、自动吊挂流水线等现代化设备500余台套，其中编织机100台，缝合机200台；年产能150余万件。产品覆盖美国、英国、法国、西班牙、瑞士、日本、韩国、俄罗斯等国家和地区。工厂通过了BSCI、SLCP、WRAP等标准认证。

The factory is located in Sino-Korean Industrial Park, Sishui Economic Development Zone, Jining, Shandong, with a building area of 14,000 square meters and 300 employees; it has more than 500 sets of modern equipments such as intelligent knitting machines, high-speed sewing machines and automatic hanging lines, including 100 sets of knitting machines and 200 sets of sewing machines; the annual production capacity is more than 1.5 million pieces. The products cover the United States, Britain, France, Spain, Switzerland, Japan, Korea, Russia and other countries and regions. The factory has passed BSCI, SLCP, WRAP, GRSF and other standard certifications.





# 济宁毛衫生产基地—乔盛纺织科技

Jining Sweater Production Base-Qiaosheng Textile Technology





# 济宁针织生产基地—乔安纺织服装

## Jining Knitting Production Base-Qiaoan Textile and Garment

公司于2017年12月成立，位于山东省济宁市汶上县经济开发区，主要产品有针织T恤衫、睡衣，梭织羽绒服等，现有工人300余人，厂房面积11000m<sup>2</sup>，各类机器设备267台/套，年产针织类220万件，梭织类35万件。

The company was established in December 2017, located in Wenshang County Economic Development Zone, Jining City, Shandong Province, the main products are knitted T-shirts, pajamas, woven down jackets, etc. The existing workers are more than 300, the plant area is 11,000 square meters, all kinds of machines and equipments are 267 sets, with an annual production capacity of 2.2 million pieces of knitted category and 350,000 pieces of woven category.





# 泰安梭织生产基地—乔欣纺织服装

Tai'an Woven Production Base-Qiaoxin Textile and Garment

成立于2018年2月，地址位于泰安市岱岳区大汶口镇。主要产品有梭织工装、裤子、针织T恤等，现有工人200余人，厂房面积10000 m<sup>2</sup>，各类机器设备200余台/套，年产梭织类200万件，针织类20万件。

The company was established in February 2018, located in Dawenkou Town, Daiyue District, Tai'an City. The main products are woven workwear, pants, knitted T-shirts, etc. There are more than 200 workers, plant area of 10,000 square meters, more than 200 sets of various types of machines and equipment, with an annual production capacity of 2 million pieces of woven category and 200,000 pieces of knitted category.





# 威海毛衫生产基地—曼莎纺织服装

Weiha sweater Production Base-Mansha Textile and Garment

成立于2015年12月，现有直属员工300余人；拥有智能编织机、高速缝合机、自动吊挂流水线等现代化设备200余台套；年产能200余万件。

Established in December 2015, the company has more than 300 direct employees; more than 200 sets of modern equipments such as intelligent knitting machines, high-speed sewing machines, automatic hanging assembly lines; with an annual production capacity of more than 2 million pieces.





# 缅甸毛衫生产基地—LIC缅甸

## Myanmar Sweater Production Base-LIC Myanmar

LIC缅甸工厂，2019年4月成立，位于缅甸仰光市，面积1.5万平米，高速缝合机1000台，工人800人，20吨超滤/4吨纯净水设备两套，500KVA/130KVA发电机两套，年产300万件。

LIC Myanmar factory, established in April 2019, is located in Yangon, Myanmar, with an area of 15,000 square meters, 1,000 high-speed sewing machines, 800 workers, two sets of 20-ton ultra-filtration/4-ton pure water equipments, two sets of 500KVA/130KVA generators, and an annual production capacity of 3 million pieces.





# 缅甸毛衫生产基地—LIC缅甸

## Myanmar Sweater Production Base-LIC Myanmar





# 缅甸针梭织生产基地—联桥缅甸服装

## Myanmar Needle and Woven Fabric Production Base-Lianqiao Myanmar Garment

联桥缅甸服装厂，2022年4月成立，位于缅甸仰光市，面积2万平米，工人1200人，主要产品T恤衫、裤子、棉衣、羽绒服等，年产500万件。

Lianqiao Myanmar Garment Factory, established in April 2022, is located in Yangon, Myanmar, with an area of 20,000 square meters and 1,200 workers, the main products are T-shirts, pants, cotton jackets, down jackets, etc., with an annual production capacity of 5 million pieces.



产品展示

毛衫系列 Sweater Series

Production Showcase





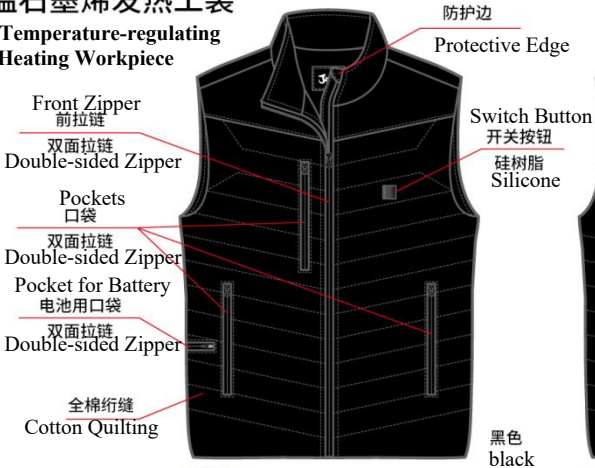
# 产品展示

Production Showcase

## 智能调温石墨烯发热工装 Intelligent Temperature-regulating Graphene Heating Workwear



智能调温石墨烯发热工装  
Intelligent Temperature-regulating  
Graphene Heating Workpiece



黑色  
black



藏青  
navy blue



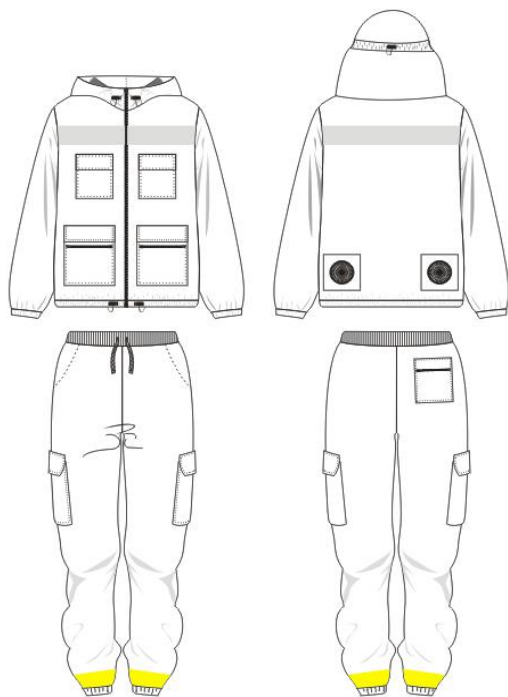
花纹图

扎染黑

# 产品展示 移动式空调防护工装 Mobile Air Conditioning Protective Workwear

## Production Showcase

### ➤ 效果图 Rendering



### ➤ 成衣照片 Garment Photos



The fan is connected to the rechargeable battery, and the air conditioner cools the internal circulation.

- 钛合金涂层面料, 有效降温6°C以上; Titanium alloy coated fabric, effectively cooling down more than 6°C;
- 加上两侧风扇设计, 自带移动式空调系统, 轻松达到降温效果; With the fan design on both sides, it comes with its own mobile air-conditioning system to achieve cooling effect easily;
- 里子领口采用银离子面料, 有效抗菌排湿速干。The lining neckline is made of silver ion fabric, which is effective antibacterial moisture wicking and quick drying.
- 帽子依据天气情况随机调节设计; The hat is designed to adjust randomly according to the weather conditions;
- 面料自带防水功能, 随时应对恶劣天气的变化。The fabric is self-contained and waterproof, ready to handle inclement weather.

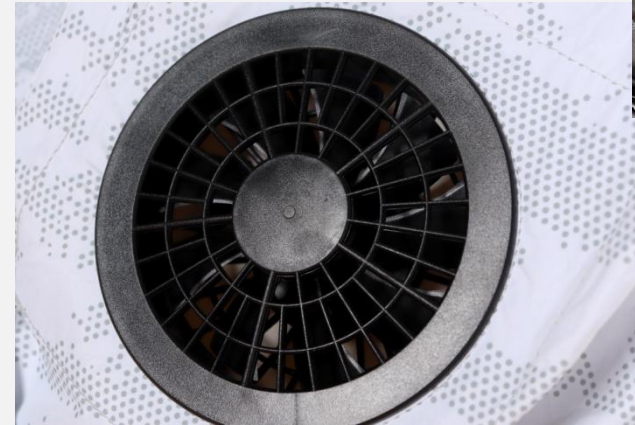
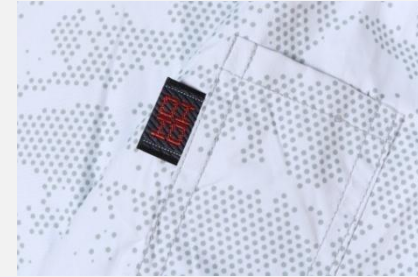


风扇连接充电宝, 空调凉感内循环。



# 产品展示 户外空调服工装 Outdoor Air-conditioning Clothing Workwear

## Production Showcase



## 产品展示 个性化防晒工装 Personalized Sunscreen Workwear Production Showcase





# 产品展示 国内工装 Domestic Workwear

## Production Showcase



# 产品展示 棉服 Cotton-padded Clothes

## Production Showcase





# 产品展示 校服系列 School Uniform Series

## Production Showcase



# 产品展示 职业套装 Business Suit

## Production Showcase



职业装定制，根据客户  
定位风格，选择不同面  
料款式，支持量体裁衣  
和私人定制。

The customization of  
business suit can be based  
on the customer's  
positioning style, choose  
different fabric styles, and  
support to act according to  
actual circumstances and  
private customization.





# 产品展示 衬衣、西装裤 Shirt, Suit Pant

## Production Showcase

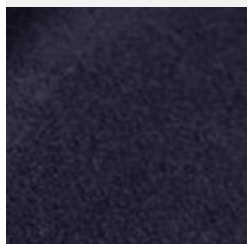


# 产品展示 毛呢大衣 Woolen Coat

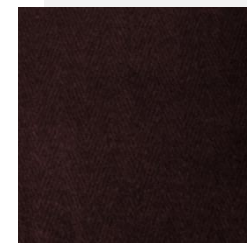
## Production Showcase



100% wool



100% cashmere



100% wool











# 社会责任

Social Responsibility



威海高区“社会妈妈”爱心志愿者 2012 年首期神道口中学牵手结对 仪式





# 核心价值观：感恩、责任

## CORE VALUE: THANKSGIVING ,RESPONSIBILITY

联桥管理之道：日事日毕，总结反省，商报联，严谨高效，主动自觉，遵守制度，有所为有所不为

Lianqiao Management Approaches: To complete daily task on time, summarizing and improving, to discuss, to report and to communicate, precisely and efficiently, to abide rules, to be aware that there are things must be done and things must not be done.

联桥用人之道：能力至上、人尽其才、三位一体（业绩，潜质，品格）

Lianqiao Recruitment Rules: Ability is the key, put everyone to the best use, three-in-one (performance, potential, trait)

联桥工作之道：鞠躬尽瘁的工作精神，一丝不苟的工作态度，计划先行的工作作风，预算成本的工作方式

Lianqiao Working Style: To give the last measure of devotion, carefully and meticulously; to plan in advance, budget cost first.

联桥基本能力：学习能力、凝聚能力、创新能力

Lianqiao Basic Competencies: Study, Cohesion, Creation







SINCE 1997