



LIANQIAO

GROUP

**GRATITUDE
RESPONSIBILITY**

LIC

LIC
联桥集团

Company
Profile

Production
Capacity

Production
Showcase

Company
Culture

LIC

Company Profile



LIANQIAO GROUP
联桥集团

Company Name

- Weihai Lianqiao International Cooperation Group Co.

Established on

- November 28, 1997

No. of Staff

- 1800 employees

Business Performance

- Annual turnover of 200 million dollars

Company Profile



- Design-led, brand-oriented, high-end foreign trade as the main body, supported by modern factories, integrating garment design, research and development, production and sales.
- It is one of the 118 national textile product development bases of China Textile Industry Federation, a backbone enterprise of textile and garment industry in Shandong Province.
- Annual production of 50 million pieces, the products are exported to more than 30 countries in Asia, America and Europe.

荣誉认证
HONOR

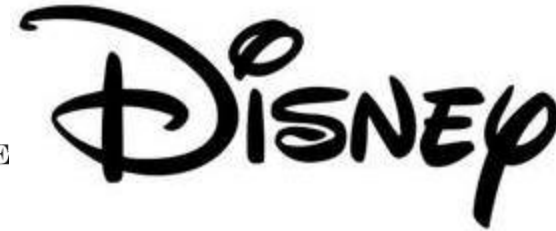
- **China Famous Trademarks**
- **National Contract-abiding and Credit-abiding Enterprise**
- **National May 1st Labor Award**
- **China's Top 100 Garment Enterprises**
- **Top 100 Private Enterprises with Brand Value in Shandong Province**
- **Top 500 Private Foreign Trade Companies in China**
- **Ministry of Industry and Information Technology Textile and Garment 100 brands**
- **Customs Advanced Certification Enterprise**
- **The Most Caring Charity Enterprise in Shandong Province**

Cooperative Brands

- LianQiao Group has established itself as a trusted premium partner to renowned international brands including ARMANI, TARGET, GAP, WALMART, and Disney.



ALMOST ☆ FAMOUS



FOREVER 21®



The company has established an International Fashion Creative Center covering an area of over 2,000 square meters, which integrates multiple functions including new product launches, fashion shows, and a showroom.

China Knitting Yarn Resource Sharing Platform

- In partnership with the government, we independently built China's only sweater yarn industrial platform — the National Sweater Yarn Resource Sharing Platform. It unites 2,000 suppliers, 20,000 yarn samples, and 50,000 electronic data sets, supported by a 1,000m² exhibition hall and 2,000m² sample library.

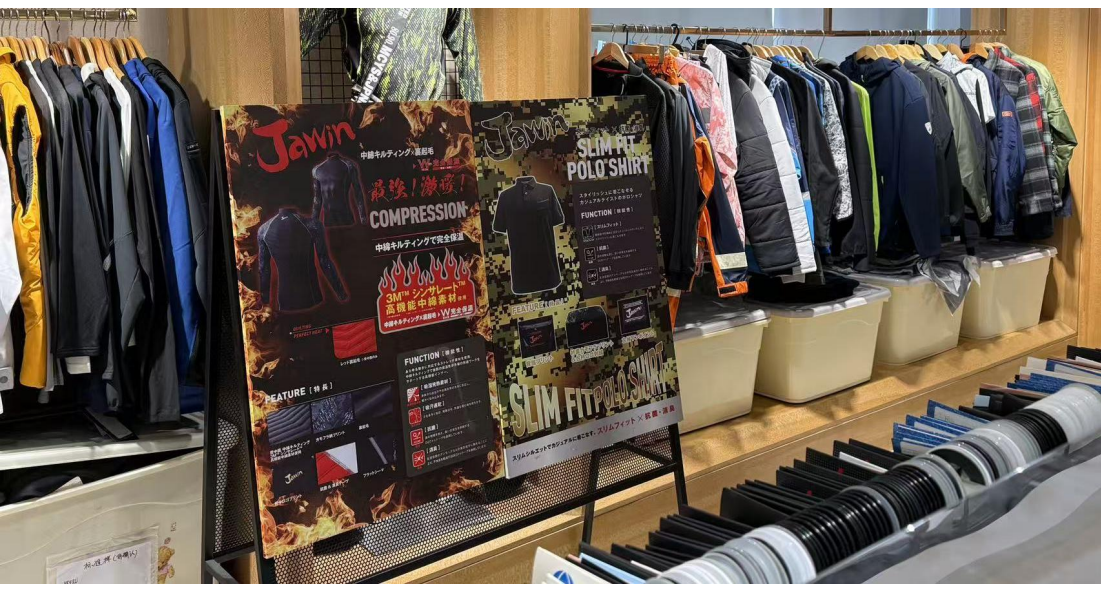


Uniform Research and Development Center

- We operate the Lianqiao Workwear R&D Center, focusing on professional, labor protection, and functional workwear.

A strategic supplier to WORKMAN and JICHODO (Japanese workwear brands), we are a Shandong Provincial Industrial Design Center.





3D DESIGN



CHECK DIFFERENT JACQUARD EFFECT
THROUGH WEBSITE OR PHONE SCANNING



3D DESIGN: 3D Light Design, Massive Proposals





CS30398E-01WINNERS



手机扫描二维码查看



CS30398E-01WINNERS



手机扫描二维码查看



Production Capacity

- ❑ Lianqiao Group builds 4 domestic and international production bases in Shandong Weihai, Jining, Tai'an and Myanmar, and constructs 6 direct benchmarking factories, equipped with lifting production lines, all kinds of production and finishing equipments, and special computer machines. 1600 cooperative factories.
- ❑ The company produces more than 50 million pieces annually, covering high, medium, and low grades woven, knitted and sweater products.
- ❑ We have passed international audits and certifications and qualifications such as GRS, BCI, WRAP, Disney/Disney, BSCI, SLCP and so on.



Jining Knitting Production Base-Qiaoan Textile and Garment

Core Company Overview

- **Location:** Jining, Shandong Province
- **Plant area:** 14,000 square meters
- **Employees:** 300 employees
- **Production Equipment:** Over 500 sets of modern equipment, including intelligent knitting machines, high-speed sewing machines, and automatic hanging lines; among them, 100 sets of knitting machines and 200 sets of sewing machines.
- **Product:** Sweater
- **Annual Capacity:** More than 1.5 million pieces
- **Core Certifications:** Certified to multiple international standards, including BSCI (Business Social Compliance Initiative), SLCP (Social & Labor Convergence Program), WRAP (Worldwide Responsible Accredited Production), and GRSF (Global Recycled Standard Foundation).



Jining Knitting Production Base-Qiaoan Textile and Garment



Jining Knitting Production Base-Qiaoan Textile and Garment

Core Company Overview

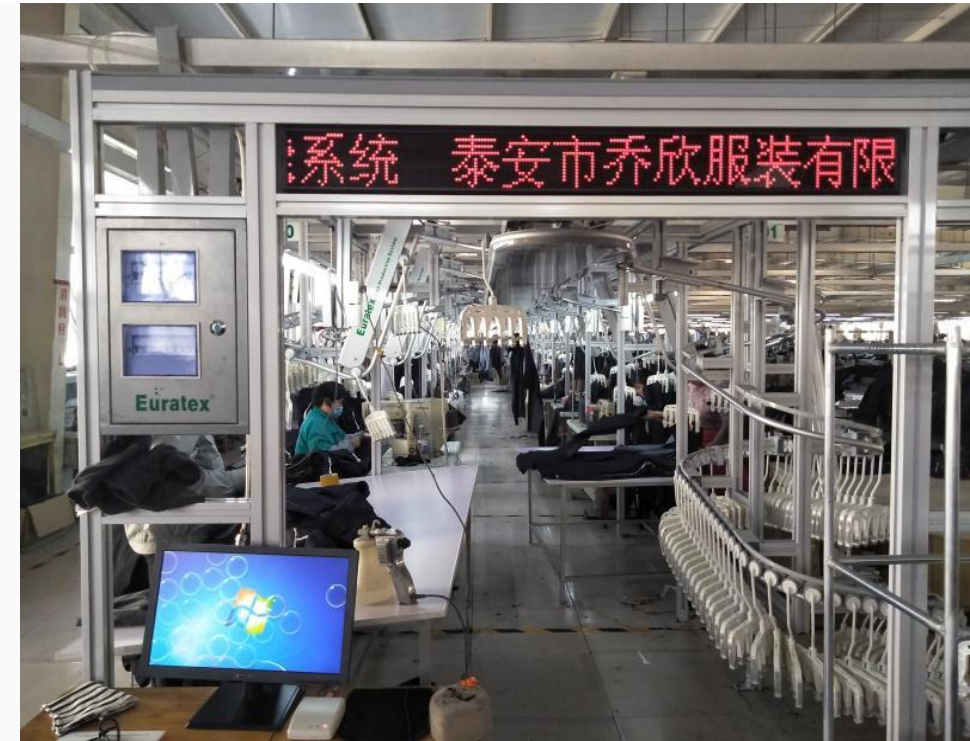
- **Location:** Jining, Shandong Province
- **Plant area:** 11000 square meters
- **Employees:** 300 employees
- **Production Equipment:** A total of 267 machines and equipment units
- **Product:**The main products include knitted T-shirts, pajamas, and woven down jackets, etc.
- **Annual Capacity:** 2.2 million pieces of knitted products; 350,000 pieces of woven products
- **Core Certifications:** Certified to multiple international standards, including BSCI (Business Social Compliance Initiative), WRAP (Worldwide Responsible Accredited Production), and GRSF (Global Recycled Standard Foundation).



Tai'an Woven Production Base-Qiaoxin Textile and Garment

Core Company Overview

- **Location:** Tai'an , Shandong Province
- **Plant area:** 10000 square meters
- **Employees:** 200 employees
- **Production Equipment:** More than 200 sets of various types
- **Products:** Main products cover woven items (woven workwear, pants) and knitted items (knitted T-shirts), etc.
- **Annual Capacity:** 2 million pieces of woven products; 200,000 pieces of knitted products





Core Company Overview

- **Location:** Weihai, Shandong Province
- **Plant area:** 20,000 square meters
- **Employees:** 300 employees
- **Production Equipment:** More than 200 sets of modern equipment, including intelligent knitting machines, high-speed sewing machines, and automatic hanging assembly lines
- **Product:** Sweater
- **Annual Capacity:** More than 2 million pieces

Myanmar Sweater Production Base–LIC Myanmar

Core Factory Overview

- **Factory Name:** LIC Myanmar Factory
- **Location:** Yangon, Myanmar
- **Plant Area:** 15,000 square meters
- **Employees:** 800 employees
- **Core Production Equipment:** 1,000 high-speed sewing machines
- **Supporting Facilities:** 2 sets each of 20-ton ultrafiltration equipment and 4-ton pure water equipment; 2 sets each of 500KVA and 130KVA generators
- **Annual Capacity:** 3 million pieces





Myanmar Needle and Woven Fabric Production Base-Lianqiao Myanmar Garment

Core Factory Overview

- **Factory Name:** Lianqiao Myanmar Garment Factory
- **Location:** Yangon, Myanmar
- **Factory Area:** 20,000 square meters
- **Employees:** 1,200 employees
- **Main Products:** T-shirts, pants, cotton-padded jackets, down jackets, etc.
- **Annual Capacity:** 5 million pieces



Myanmar Needle and Woven Fabric Production Base-Lianqiao Myanmar Garment











Lookbook: Long down coat & Down Gilet



Lookbook: Cotton insulation jacket



Lookbook: Puffer jacket



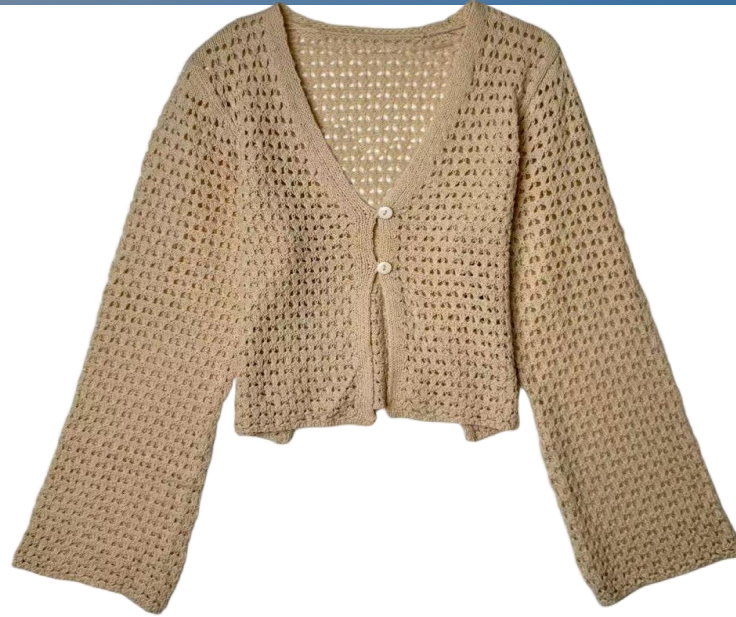
Lookbook: Tweed coat







Lookbook: Sweaters





Research and
Development
Office



Corporate Culture



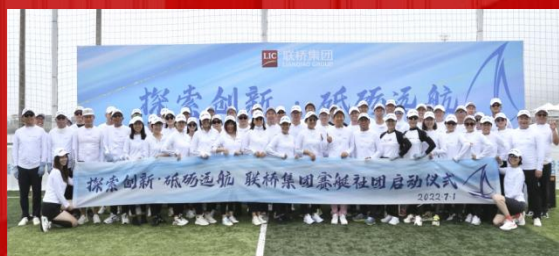
LIC Chorus



LIC Football Team



LIC Golf Club



LIC Rowing Club



LIC Basketball Club



Sports meet



LIC Boxing Club



LIC Running Club



SINCE 1997

SINCE 1997